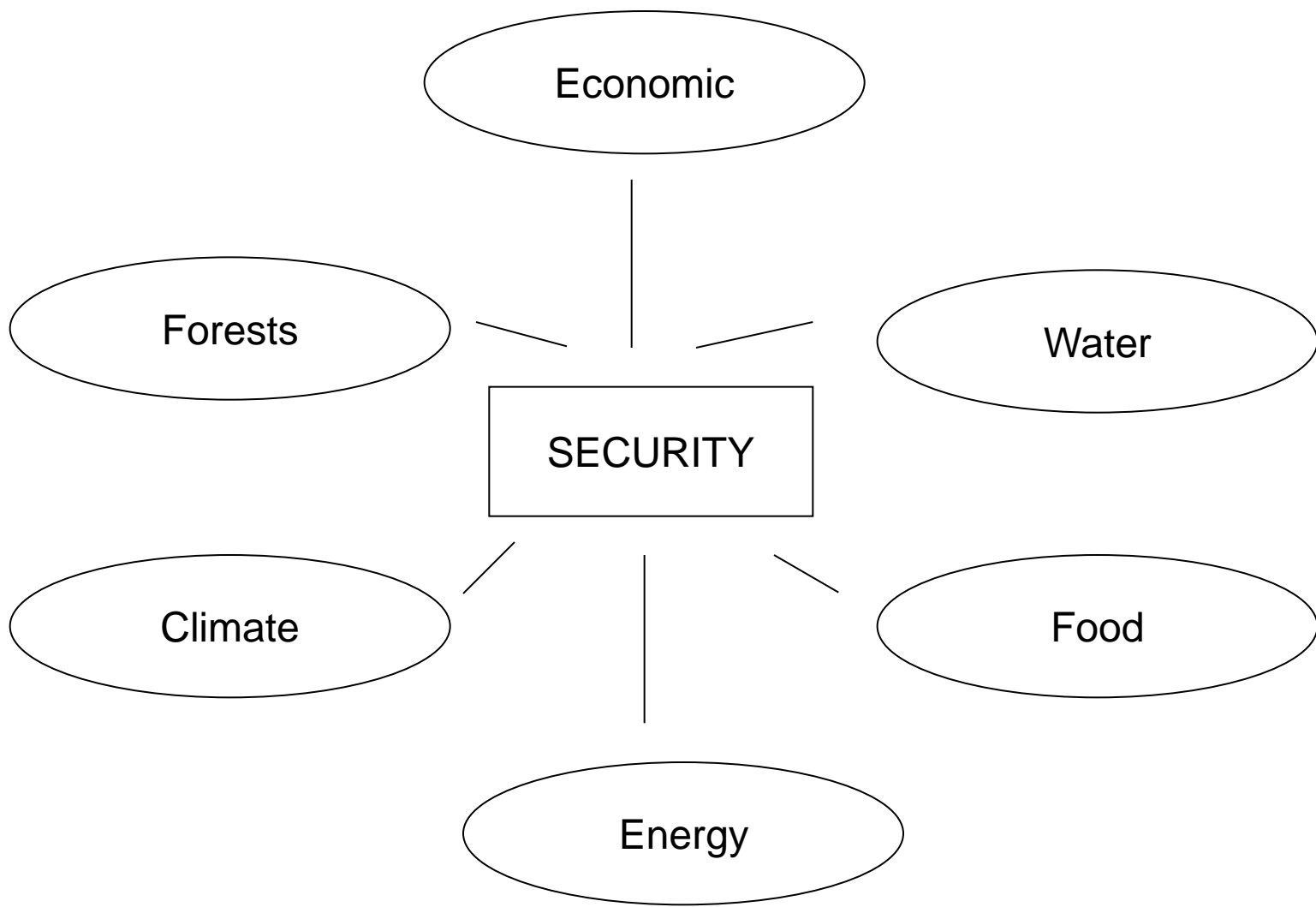
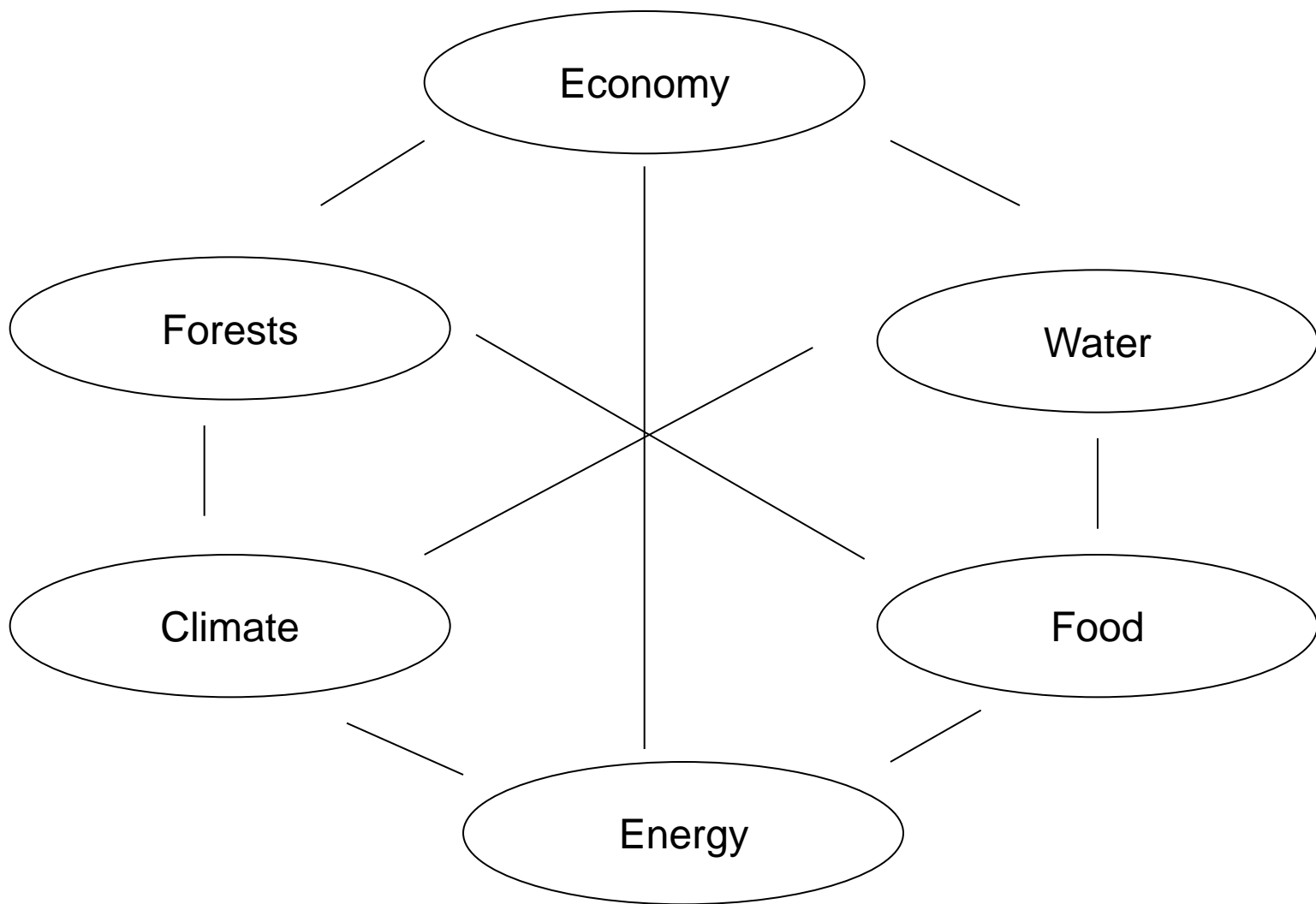


# **THE DESTRUCTION AND REBUILDING OF NATURAL CAPITAL - FROM SOUTH KOREA TO SOUTH PENNINES**

**Tim Rollinson  
Director General  
Forestry Commission**





An Integrated Approach to  
the Management of all our  
Natural Resources is essential

We must make Wise Choices  
and make Better Use of Land  
and Natural Resources

# FORESTS

More than 75% of the world's  
forests have been Cleared,  
Neglected or Degraded

## DEGRADATION

Sheer scale of Degradation shows  
how much Damage We Have Done

And the Scale of the Opportunity  
to Restore What We Have Lost

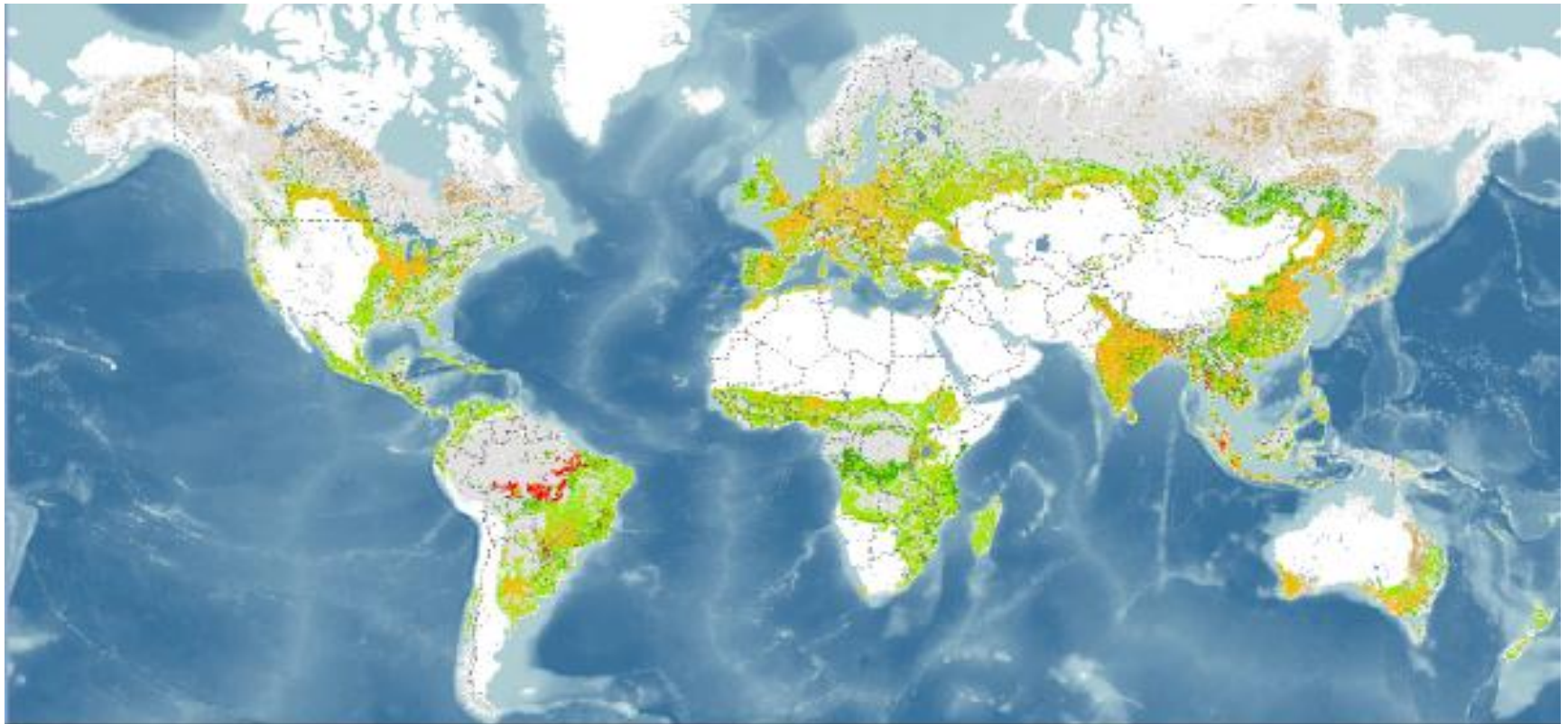
## RESTORATION

The Global Partnership on Forest  
Landscape Restoration

Aims to catalyze support for the  
restoration of forests and degraded  
lands



The Global Partnership has shown that more than 2 Billion Hectares of deforested and degraded landscapes could be restored



## Interactive Atlas of Forest and Landscape Restoration Opportunities

## THE UK

In the UK forest cover fell to less than 5% one hundred years ago

Today restoration efforts have increased forest cover to 12%

A massive effort to restore natural capital

## NATURAL CAPITAL

Is about the values we place on our natural environment

It is not static but changes over time

The Pennines were once covered in trees -  
cleared by Neolithic man

Today we value what remains

Intrusion into these rugged, tree-less  
landscapes is seen as a threat

# FORESTRY IN THE LAKE DISTRICT

An Example of how Values change:

From Opposition to New Forests

To Protection of the New Forests

## NATURAL CAPITAL

The Values of the New Forests  
have increased over time

As a direct result of The Build  
Up of Natural Capital

## A LANDSCAPE SCALE APPROACH

The Landscape Approach delivers  
an Integrated Package of land uses

The Landscape Approach  
'forces' an Integrated Approach



A Landscape Approach offers an  
Investment in Natural Capital

An Investment in All Our Futures

## THE FUTURE

If we want a future that is better than the one we have now

That is fit and healthy for our children to live in

That is economically, socially and environmentally sustainable

Then we must reinvest in our natural capital

And we must do that now